

The Everpure Dual High Flow Coldrink System has been designed for ease of installation and maintenance. Once installed, components designed to be periodically replaced are easily accessible. Four sturdy fasteners should be used in mounting the system. The Dual High Flow Coldrink System is shipped from the factory partially assembled for ease of installation and to provide the best protection against shipping damage.

YOU HAVE RECEIVED THE FOLLOWING:

1. One pre-assembled header assembly, consisting of these items:
(See diagrams on page 3 and 4).
 - Two K-series Prefilter heads
 - Two four-head High Flow manifold assemblies with brackets
 - One influent gauge (front High Flow Head)
 - One effluent gauge with warning triangle and follower arm (front High Flow Head)
 - One 3/4" three-way valve
 - One outlet manifold consisting of seven 1/2" ball valve (EV9337-22) or one 3/4" ball valve (EV9337-44).
2. Two K-series Prefilter bowls
3. Two EC210 replacement prefilter cartridges
4. Eight XC replacement cartridges (separate box/EV9337-22) or eight MC replaceable cartridges. (Separate box/EV9337-44)

SELECTING A MOUNTING LOCATION

1. Give consideration to the weight of the system when operating (filled with water), 87 lbs. (39.5 kg).
2. The mounting location should
 - a. allow for at least 39 3/4" vertical x 37 3/4" horizontal space for in and out water line connections and cartridge replacement.
 - b. Be near a drain for flushing purposes.

INSTALLATION

It is important that the installation be clean and sanitary. We recommend immersing water-contact parts (fittings, tubing, etc.) in chlorinated water (a capful of bleach per bucket) at the start of the procedure.

NOTE: System is rated for 125 psi non-shock maximum inlet water pressure. Appropriate regulators must be used if applicable.

1. Shut off power to machine.
2. After choosing the appropriate location for mounting, place the header assembly on the mounting surface, mark and drill one hole that is at least 4 feet from the floor. Install appropriate anchor and bolt but leave approximately 1/8" of bolt head protruding.
3. Slip one end of bracket over the protruding screw, swivel assembly up and mark next anchor location at the other end. The outside 2 bracket holes are located exactly 16" apart. Repeat this process until all four anchors and bolts are firmly in place.
4. Connect a minimum 3/4" water line to 3/4" three-way valve.
5. Connect outlet(s) of ball valve(s) to equipment served.

TESTING SYSTEM FOR LEAKS

1. Close all valves on Dual High Flow Coldrink System.
2. Install prefilter cartridges and bowls. Install 8 cartridges into header assembly following directions under Cartridge Change.
3. Connect garden hose to flushing valve and run to drain.

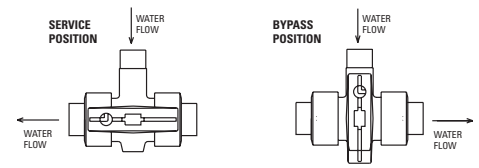


Figure 1

TESTING SYSTEMS FOR LEAKS (continued)

NOTE: Some municipal plumbing codes and good sanitary practices require a definite air gap at connection point. Secure loose end of garden hose to keep it from moving when you turn the water on.

4. Open flushing valve and slowly turn 3-way inlet valve handle to the service position (See figure 1 for valve orientation). Water should begin to flow from the garden hose to the drain.
5. Allow water to run to drain at full flow at least 5 minutes.

NOTE: For maximum life all cartridges must be flushed before use as described above. New cartridges must be flushed after each cartridge change before being put into service.

6. After the 5 minute flushing period, close the flushing valve. Check the system for leaks.
7. If no leaks are detected, disconnect the garden hose and slowly open the outlet valve(s) serving the fountain equipment.

CARTRIDGE CHANGE DETERMINATION

The Everpure pressure gauges provide a quick and simple means of determining when cartridges should be changed. The gauge on the left measures incoming pressure and the gauge on the right measure the water pressure after the precoat cartridges.

Filter cartridges should be changed when the follower arm and gauge needle (gauge on the right) are both in the red area while the machine is in operation and yet the gauge on the left shows adequate line pressure (see Figure 2).

If the cartridges are new and properly flushed, and the gauges register inadequate pressure, either the prefilter cartridge may be clogged, the municipality may be supplying inadequate water pressure, or some other restriction may exist in the line. In either case, the incoming water pressure must be increased to receive optimum life of the filter cartridges.

CARTRIDGE REPLACEMENT

NOTE: Cartridge change should be performed during non-peak hours.

1. Shut off any equipment served by the Dual High Flow Coldrink System.
2. Close outlet valve(s) serving the fountain systems.
3. Turn 3-way inlet valve handle to by-pass position.
4. Slowly open the flushing valve.
5. Remove the cartridges and install new cartridges per the instructions on the cartridge label.
6. Slowly turn the 3-way inlet valve handle to the service position and allow water to run to drain for at least 5 minutes.
7. Close flushing valve.
8. Open outlet service valve(s) to fountain equipment.
9. Turn on power to fountain equipment.

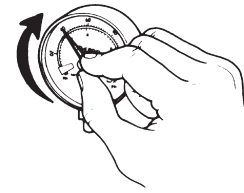
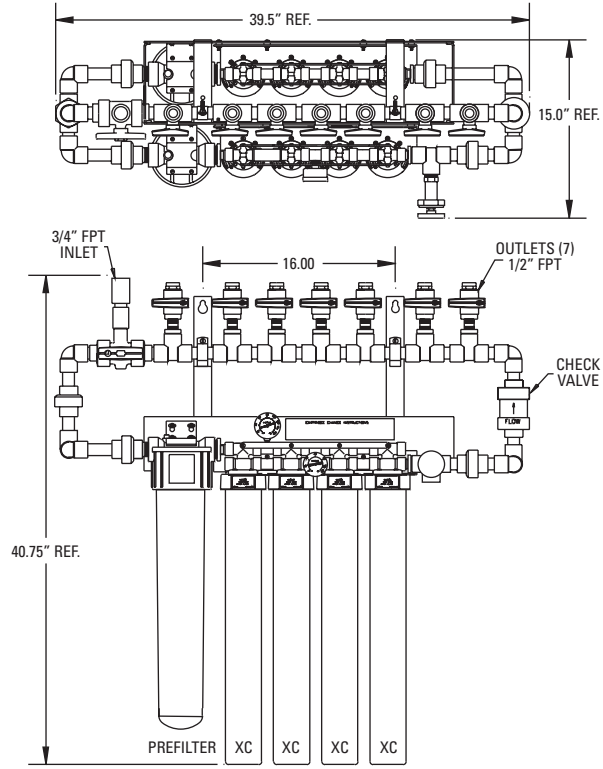


Figure 2

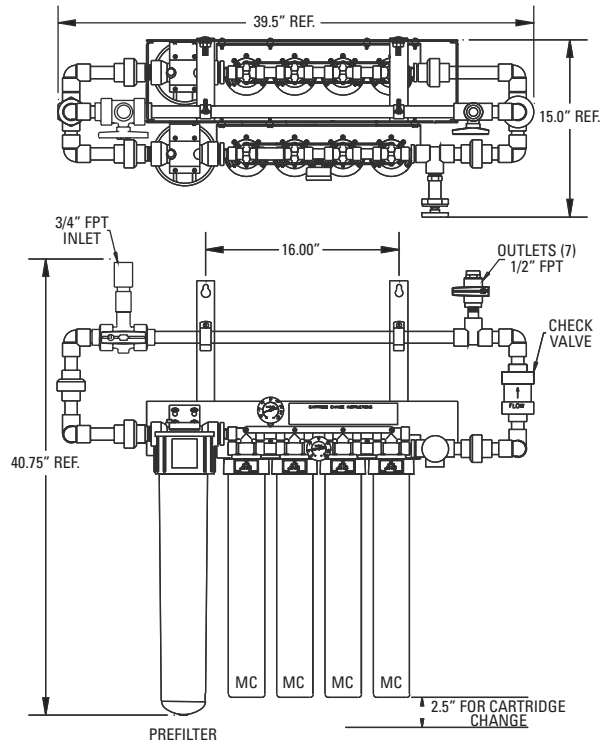
REPLACEMENT PARTS

Description	Part No.
Inlet Pressure Gauge	EV3026-99
Outlet Pressure Gauge	EV3068-18
Prefilter Head	EV3060-32
20" Prefilter Bowl with O-Ring	EV3070-18
O-Ring for Prefilter Bowl	EV3071-19
1/2" Ball Valve	EV3093-68
3/4" Ball Valve	EV3100-63
MC Cartridge - 6 pack	EV9612-06
MC Cartridge - 1 pack	EV9612-05
XC Cartridge - 6 pack	EV9613-96
XC Cartridge - 1 pack	EV9613-09
EC 210 Cartridge - 20 pack	EV9534-20
EC 210 Cartridge - 6 pack	EV9534-26

DUAL HIGH FLOW SYSTEM EV9337-22



DUAL HIGH FLOW SYSTEM EV9337-44





For sales, replacement components, and service, contact your Everpure dealer or:

Everpure, Inc.: 1040 Muirfield Drive • Hanover Park, Illinois 60133 • 800.323.7873

In Europe: Toekomstlaan 30 • B-2200 Herentals, Belgium

In Japan: Hashimoto MN Bldg. 7F • 3-25-1 Hashimoto Sagamihara-Shi • Kanagawa 229-1103, Japan

Technical Service

800.942.1153

www.everpure.com